

CST Institute -MS-CIT OBJECTIVES

- 1) Web spiders are also known as web crawlers
  - a) true
  - b) false
- 2) he ---- displays a list of commands that can be used to gain access to information, change hardware settings, find information stored in the, get online help and shut down the computer
  - a) GUI
  - b) Desktop
  - c) Icon
  - d) Start Button
- 3) \_\_\_\_\_ is a 16-bit code designed to support international languages like Chinese and Japanese.
  - a) Unicode
  - b) ASCII
  - c) EBCDIC
  - d) None of these
- 4) Voice band also known as voice grade and low bandwidth which is used for standard telephone communication..
  - a) true
  - b) false
- 5) Sending messages on the internet to another person's mailbox is
  - a) E-business
  - b) E-letters
  - c) E-mail
  - d) Cyber mail
- 6) Which of the following device is not from pointing type of device?
  - a) Mouse
  - b) Touch screen
  - c) Keyboard
  - d) Joystick.
- 7) Secondary storage is non volatile.
  - a) true
  - b) false
- 8) Anti virus programs are meant to guard a computer from invasion of the virus programs.
  - a) true
  - b) false
- 9) \_\_\_\_\_ is the name of the process of converting from digital to analog.
  - a) Modulation
  - b) Demodulation
  - c) Conversion
  - d) None of these
- 10) Hard Disk Packs are removable storage devices used to store massive amounts of information.
  - a) true
  - b) false

CST Institute -MS-CIT OBJECTIVES

- 11) Keyboards are removable storage devices.
  - a) true
  - b) false
- 12) \_\_\_\_ supports direct, "live" electronic communication between two or more friends or buddies.
  - a) Instant Member
  - b) Instant Messaging
  - c) Internet Mail
  - d) None of these
- 13) Microprocessor has two basic components
  - a) Control Unit
  - b) Arithmetic Logic Unit
  - c) All of these
  - d) None of these
- 14) In a Star Network , a number of small computers or peripheral devices are linked to a central unit.
  - a) true
  - b) false
- 15) Each track is divided into wedge-shaped sections called Sectors.
  - a) true
  - b) false
- 16) The keyboard keys like Caps Lock that turn a feature on or off are called.
  - a) Function keys.
  - b) Toggle Keys
  - c) Special purpose keys.
- 17) To send e-mail to someone you need -----
  - a) Resident Address
  - b) Internet Connectivity
  - c) Fax address
  - d) None of these
- 18) B2C, C2C and B2B are types of -----
  - a) E-mail
  - b) E-commerce
  - c) e-cash
  - d) All of these
- 19) RISC stands for \_\_\_\_
  - a) Reduced Instruction Set Computer
  - b) Read Instruction Set Computer
  - c) Reduced Instruction Software Computer
- 20) \_\_\_\_are graphical objects used to represent and open commonly used applications.
  - a) GUI
  - b) Drivers
  - c) Windows NT
  - d) Icons

CST Institute -MS-CIT OBJECTIVES

- 21) Which of these is not an input device ?
- a) **Monitor**
  - b) Mouse
  - c) Keyboard
  - d) Joystick
- 22) Demodulation is the name of the process of converting from digital to analog.
- a) true
  - b) **false**
- 23) \_\_\_\_\_ is the bandwidth used in special leased lines to connect minicomputers and mainframes as well as to transmit data over long distances.
- a) Low band
  - b) **High band**
  - c) Medium band
  - d) Small band
- 24) Secondary storage is nonvolatile.
- a) **True**
  - b) false
- 25) Which lights are present on a webcam that are helpful in a low-light environment?
- a) **LED Light**
  - b) Natural Light
  - c) HD Light
  - d) Spot Light
- 26) Keyboard is background software that helps the computer manage it's own internal resources
- a) true
  - b) **false**
- 27) A track on a disk is one of the many circular ring shaped areas where data is written magnetically.
- a) **true**
  - b) false
- 28) \_\_\_\_\_ is background software that helps the computer manage it's own internal resources.
- a) **System software**
  - b) Information
  - c) Objects
  - d) Recycle Bin
- 29) Two important components of the system unit are the microprocessor and memory.
- a) **true**
  - b) false
- 30) ASCII, EBCDIC and Unicode are binary coding schemes.
- a) **true**
  - b) false
- 31) Primary function of a common keyboard in a computer is to play music like a piano.
- a) true

CST Institute -MS-CIT OBJECTIVES

- b) false
- 32) \_\_\_\_ consists of step-by-step instructions that tells the computer how to complete the task
  - a) Program
  - b) Hardware
  - c) Data
  - d) Objects
- 33) Web spiders are also known as search engines
  - a) true
  - b) false
- 34) \_\_\_\_ is a utility program that locates and eliminates unnecessary fragments and rearranges files and unused disk space to optimize operations.
  - a) Disk Defragmenter
  - b) Backup
  - c) Uninstall
  - d) All of these
- 35) Operating Systems are programs that manage resources, provide user interface and run applications.
  - a) true
  - b) false
- 36) Information sent over the Internet is divided into small pieces called
  - a) Packets
  - b) PPPs
  - c) e-mail forms
  - d) Messages
- 37) \_\_\_\_ are used to store data and programs.
  - a) Folder
  - b) File
  - c) Recycle Bin
  - d) None of these
- 38) Plotters are used to produce special purpose graphics
  - a) true
  - b) false
- 39) Plug-ins are programs that are automatically started and operate as a part of the browser
  - a) true
  - b) false
- 40) The ----- is expected to alter communications and computer systems.
  - a) Internet
  - b) Network
  - c) Wireless Revolution
  - d) None of these
- 41) Primary function of a monitor is to display information to the user.
  - a) true
  - b) false

CST Institute -MS-CIT OBJECTIVES

- 42) FTP means
- a) Field Transfer Project
  - b) File Transfer Project
  - c) File Transfer Protocol
- 43) \_\_\_\_\_ is a concept related to using computer networks to link people and resources.
- a) Data
  - b) Information
  - c) Linking
  - d) Connectivity
- 44) \_\_\_\_\_ is a collection of several separate troubleshooting utilities.
- a) Backup
  - b) Uninstall
  - c) Norton Utilities
  - d) All of these
- 45) ISP stands for -----
- a) Internal Service Plan
  - b) Internet Service Plan
  - c) Integral Service Provider
  - d) InternetServiceProvider
- 46) Trouble shooting programs recognize both hardware and software problems and try to correct them as far as possible.
- a) True
  - b) false
- 47) Which of the following components is used to store data?
- a) CPU.
  - b) Memory.
  - c) Input Device.
  - d) Output Device.
- 48) The functions of a mouse and a trackball are different.
- a) true
  - b) false
- 49) Applets are the special programs written in ----- language.
- a) Java
  - b) HTML
  - c) HTTP
  - d) None of these
- 50) Touch surface is a pointing device
- a) true
  - b) false

CST Institute -MS-CIT OBJECTIVES

- 51) In a microcomputer system, the central processing unit (CPU) or processor is contained on a single chip called the microprocessor.
- a) true
  - b) false
- 52) The last part of the domain name following the dot(.) is called as -----
- a) domain codes
  - b) e-mail targets
  - c) DNSs
  - d) mail to addresses
- 53) Which programs reduce the size of the files so that they occupy lesser space on the disk?
- a) Backup
  - b) Disk Cleanup
  - c) File Compression
- 54) Which of these facilities is provided by an operating system ?
- a) User Interface
  - b) Surfing
  - c) Spelling Checker
  - d) Browsing
- 55) \_\_\_ provides a fast, efficient alternative to traditional mail by sending and receiving electronic documents.
- a) E-mail
  - b) G-Mail
  - c) e-Shopping
- 56) \_\_\_\_\_ network systems control and coordinate the activities of all computers and other devices on a network.
- a) NIC
  - b) NOS
  - c) LAN
  - d) None of these
- 57) \_\_\_\_\_ are electronic systems that transmit data from one location to another.
- a) Communication Systems
  - b) Communication Software
  - c) Computer Systems
  - d) None of these
- 58) Systems software includes all of the following except
- a) Operating Systems
  - b) Device Drivers
  - c) Utilities
  - d) Desktop Publishing

CST Institute -MS-CIT OBJECTIVES

- 59) What happens when the lid of the scanner is not closed properly while scanning a photograph? The scanned photo will be:
- a) **White and blurred**
  - b) Complete black
  - c) Unclear and foggy
  - d) Colorful
- 60) Output of an image on the monitor screen is often called hard copy.
- a) true
  - b) **false**
- 61) Communication Systems are electronic systems that transmit data from one location to another.
- a) **true**
  - b) false
- 62) In a \_\_\_\_\_ network, all devices are connected to a device called a hub and communicate through it.
- a) Bus
  - b) **Star**
  - c) Ring
  - d) Mesh
- 63) ASCII, EBCDIC and Unicode are example of Application Software's.
- a) true
  - b) **False**
- 64) GUI stands for
- a) **Graphical User Interface**
  - b) Greater User Interface
  - c) Graphical Union Interface
- 65) A(n) \_\_\_\_\_ is a thin strand of glass that transmits pulsating beams of light as speeds that approach 100 Gbps.
- a) Twisted Cable
  - b) Coaxial Cable
  - c) Telephone Cable
  - d) **Fiber-Optic Cable**
- 66) When you type an address such as "http://www.mkcl.org", in this .org indicates
- a) Original web site
  - b) Commercial web site
  - c) **Organizational web site**
  - d) Educational web site
- 67) Capacity of a storage device is usually measured in terms of bytes.
- a) **true**
  - b) false
- 68) Backup programs make copies of the files to be used in case the original files are damaged or lost.
- a) **true**

CST Institute -MS-CIT OBJECTIVES

- b) false
- 69) Mailing lists allow members to communicate by sending messages to a list address.
- a) true
- b) false
- 70) Websites that allow the user to search for data on keywords is:
- a) Chat engines
- b) Routers
- c) Web server
- d) Search engines
- 71) Discussion on the internet about specific topic is known as
- a) News
- b) News group
- c) Veronicass
- d) Telnet
- 72) Another name for software is
- a) Procedure
- b) Data
- c) Programs
- d) Information
- 73) \_\_\_\_\_ is the ability of the operating system to run more than one application at a time.
- a) Booting
- b) Copying
- c) Pasting
- d) Multitasking
- 74) Starting or restarting a computer is called ----- the system.
- a) Booting
- b) Coping
- c) Pasting
- d) Multitasking
- 75) \_\_\_\_\_ are highly portable devices that support the use of a stylus or pen to input commands and data.
- a) PDA
- b) Laptop
- c) Desktop
- d) Tablet PCs
- 76) The System Board connects all system components and allows input and output devices to communicate with the system unit.
- a) True
- b) False



CST Institute -MS-CIT OBJECTIVES

- 77) \_\_\_\_\_ translate the processed information from the computer into a form that humans can understand.
- a) Input devices
  - b) **Output devices**
  - c) Utilities
  - d) Peripheral devices
- 78) The keyboards keys that are labeled F1, F2 and so on are called. \_\_\_\_\_
- a) **Function keys.**
  - b) Numeric keys.
  - c) Typewriters keys.
  - d) Special purpose keys
- 79) \_\_\_\_\_ are programs that provide access to Web resources.
- a) **Browsers**
  - b) Search Engines
  - c) Programs
  - d) All of these
- 80) The easiest way to access any part of the screen in the windows operating system is using the
- a) Keyboard
  - b) Rat
  - c) **Mouse**
  - d) Joy Stick
- 81) Notebook system units are often called as -----
- a) PDA
  - b) **Laptop**
  - c) Desktop
- 82) \_\_\_\_\_ is one of the fastest-growing Internet application.
- a) E - Mail
  - b) **Shopping**
  - c) Investing
  - d) Commerce
- 83) Which of the following device is used to play fast games on a computer ?
- a) **LED Light**
  - b) Touch surface.
  - c) Touch screen.
  - d) Track ball.
- 84) Random Access Memory (RAM) is \_\_\_\_\_ type of memory
- a) Permanent.
  - b) **Temporary.**
  - c) Flash.
  - d) Smart.
- 85) Uninstall programs enable removing unneeded programs installed into the computer's hard disk.
- a) **True**

CST Institute -MS-CIT OBJECTIVES

- b) False
- 86) The .com indicates website of \_\_\_\_\_ type of organization.
  - a) **Commercial**
  - b) Complex
  - c) Company
  - d) Cargo
- 87) The term “Program” is another name for which part of the information system?
  - a) **Software**
  - b) Procedure
  - c) Data
  - d) Hardware
- 88) Backup programs make copies of the files, to be used in case the original files are damaged or lost.
  - a) **True**
  - b) False
- 89) \_\_\_\_\_ provides the user interface, controls the computers resources, and runs programs
  - a) Drivers
  - b) **Operating System**
  - c) Desktop
- 90) You can search the World Wide Web for a specific topic by using \_\_\_\_\_ and \_\_\_\_\_.
  - a) Gophers, Fidos
  - b) Scanners, Search Engine
  - c) **Search Engines, Indexes**
  - d) Browsers, Lurkers
- 91) Every computer must have an operating system.
  - a) **True**
  - b) False
- 92) \_\_\_\_\_ are removable storage devices used to store massive amounts of information.
  - a) **Hard-disk packs**
  - b) Floppy Disk
  - c) CD
  - d) None of these
- 93) Which of the following is a type of protocol?
  - a) ASCII.
  - b) RAM.
  - c) **TCP/IP.**
  - d) DBA.
- 94) Telnet and FTP are Internet standards.
  - a) **True**
  - b) false
- 95) Starting or restarting a computer is called booting the system.
  - a) **True**
  - b) false

CST Institute -MS-CIT OBJECTIVES

- 96) Which of these operating system does not have a graphical user interface ?
- a) Windows 95
  - b) Mac OS
  - c) Linux
  - d) **Ms Dos**
- 97) What is the name given to a part of circle on which data is written in a storage media ?
- a) Track
  - b) **Sector**
  - c) Cylinder
  - d) Spiral
- 98) If you connect computers together to communicate and exchange information, the result is called a(n) \_\_\_\_\_
- a) **network**
  - b) intranet
  - c) internet
  - d) extranet
- 99) In a microcomputer system, the central processing unit (CPU) or processor is contained on a single chip called the microprocessor.
- a) **true**
  - b) false
- 100) Data stored in Flash RAM does not get erased even when power to the computer is switched off.
- a) **true**
  - b) false
- 101) WAN means
- a) Wire Area Network
  - b) Wireless Area Network
  - c) Wire Art Network
  - d) **Wide Area Network**
- 102) Super Disks are produced by Imation and have a 120 MB or 240 MB capacity.
- a) **True**
  - b) False
- 103) MAN mean
- a) Master Area Network
  - b) Metropolitan Art Network
  - c) **Metropolitan Area Network**
  - d) None of these
- 104) Which Section of the IT Act deals with any information sent using computers for creating annoyance, hatred etc.?
- a) 66C
  - b) 67A
  - c) **66A**
  - d) 72

CST Institute -MS-CIT OBJECTIVES

- 105) Whoever, fraudulently or dishonestly make use of the electronic signature, password or any other unique identification feature of any other person comes under IT Act?
- a) 66C
  - b) 67A
  - c) 66A
  - d) 72
- 106) Whoever publishes or transmits or causes to be published or transmitted in the electronic form any material which contains sexually explicit act comes under IT ACT?
- a) 66C
  - b) 67A
  - c) 66A
  - d) 72
- 107) where a government official discloses records and information accessed in the course of his or her duties without the consent of the concerned person comes under act
- a) 66C
  - b) 67A
  - c) 66A
  - d) 72
- 108) Which lights are present on a webcam that are helpful in a low light environment?
- a) Spot Light
  - b) LED Light
  - c) Natural Light
  - d) HD Light
- 109) Evaluate the components of an email signature that are most critical for ensuring professional business communication. Which of the following best describes these components?
- a) Sender's name, address, and company's website address
  - b) Sender's name, company name, company's website address, and social media handles
  - c) Sender's name, company name, and personal email address
  - d) Sender's name, telephone number, and personal social media handles
- 110) An organization has a LAN with several personal computers, a high-speed laser printer, and a file server. The LAN uses Ethernet What is the most likely reason for the organization to add a network gateway to their LAN?
- a) To connect to other LANs or networks.
  - b) To enhance printing speed
  - c) To improve processing power
  - d) To increase storage capacity
- 111) Topology includes all of the following types except
- a) Circle
  - b) Bus
  - c) Star

CST Institute -MS-CIT OBJECTIVES

- d) Ring
- 112) 20.20 20 rule is used for?
- a) Arms stretch
  - b) All of the above
  - c) eye strain
  - d) Wrist strain
- 113) Which of the following best describes the function of storage devices in a computer system?
- a) They provide power to the computer components
  - b) They read data and programs from storage media
  - c) They connect different hardware components together
  - d) They process data and execute programs
- 114) Which of the following best describes the role of a router in a computer network?
- a) Coordinates the flow of data by sending messages directly between sender and receiver nodes
  - b) Connects the computer to a network as an expansion card
  - c) Manages resources like user accounts for the entire network
  - d) Forwards or routes data packets from one network to their destination in another network
- 115) Create a network plan for a university campus that requires a central point of control and easy troubleshooting.
- a) Star network
  - b) Bus network
  - c) Ring network
  - d) Tree network
- 116) Which Section of the IT Act deals with Identity Theft using computers?
- a) 67A
  - b) 66A
  - c) 66C
  - d) 72
- 117) How do Intrusion Detection Systems (IDS) enhance network security beyond what firewalls provide?
- a) By storing a backup of all network data
  - b) By using statistical techniques and heuristics to analyses network traffic for sighs of attacks
  - c) By encrypting all data transmitted over the network
  - d) By providing direct access to the internal network for trusted users
- 118) Which of the following best shows how information is sent across the Internet using packetization?
- a) A video stream is sent continuously without being divided
  - b) An email with an attachment is broken into small packets, each taking different routes, and reassembled at the destination.

- c) A document is uploaded as one big file to a cloud server
  - d) A software update is sent as a single file directly to the users device
- 119) Which of the following Apps can be used on Android smartphones to lock important apps?
- a) Camscanner
  - b) AppLockier
  - c) SHARE
  - d) Whatsapp
- 120) What is the primary purpose of a Network Interface Card (NIC) in a computer network?
- a) To manage and store data packets
  - b) To route data packets to their destination
  - c) To control network operating systems
  - d) To connect a computer to a network as an expansion card
- 121) What is Machine Learning?
- a) A type of hardware used for data storage
  - b) A process where a computer system learns by
  - c) A computer system that follows detailed instructions
  - d) A programming language for AI
- 122) Having individuals provide personal information to obtain a free offer provided through the Internet is considered what type of social engineering?
- a) User-based
  - b) Haman-based
  - c) Wet-based
  - d) Computer- based
- 123) identify the key characteristic that distinguishes infrared communication from radio wave communication
- a) Infrared communication requires a direct line-of-sight, unlike radio waves
  - b) Infrared uses light waves, whereas radio waves do not
  - c) Infrared signals are unaffected by physical obstructions, unlike radio waves
  - d) Infrared can communicate over long distances, while radio waves cannot
- 124) include mailing lists, news groups and chat groups
- a) All of these
  - b) IP Groups
  - c) Internet Groups
  - d) Discussion Groups
- 125) Consider the website below:

Feeds

Edit

Top Stories

New Questions

- a) Google Expert
  - b) Quora
  - c) StackOverflow
  - d) Wikipedia
- 126) What is a key benefit of AI-based smart home appliances?
- a) They don't require an internet connection
  - b) They are only accessible through PCs
  - c) They are cheaper than traditional appliances
  - d) They require no manual operation
- 127) Which characteristic of secondary storage devices distinguishes them from RAM in terms of data retention?
- a) Media
  - b) Volatility
  - c) Access speed
  - d) (Capacity) Capacity
- 128) From the given list, which all are the types of Memory Chips
- a) ASCII
  - b) CMOS
  - c) RAM
  - d) ROM
- 129) What is the primary role of a Software Developer with AI skills?
- a) Build robots
  - b) Conduct AI research
  - c) Analyze sales data
  - d) Make apps and software smarter with AI
- 130) How many different types of intelligence are there?
- a) 10
  - b) 5
  - c) 8
  - d) 2

CST Institute -MS-CIT OBJECTIVES

- 131) Which of the following would most likely not be a symptom of a virus?
- a) The CD-ROM stops functioning
  - b) Cad message or images are displayed on the screen
  - c) The web browser opens to an unusual home page
  - d) Existing program files and icons disappear
- 132) how happens when the lid of the scanner is not closed properly while scanning a photograph? The scanned photo will be
- a) Complete black
  - b) Unclear and foggy
  - c) Colorful
  - d) White and blurred
- 133) Directory Search is also known as
- a) All of these
  - b) Index Search
  - c) Unique Search
  - d) Direct Search
- 134) What is the name of the software that can be used for data protection in Windows?
- a) Locker
  - b) Lock Bit
  - c) Lock screen
  - d) BitLocker
- 135) How does the combination of RAM and ROM features in flash memory make it suitable for storing the system's BIOS?
- a) By being volatile and stable
  - b) By allowing updates and retaining data without power
  - c) By providing the capacity of ROM
  - d) By offering the speed of RAM
- 136) Which of the following scenarios best demonstrates the need for a Virtual Private Network (VPN) in a large organization
- a) Monitoring network traffic for potential security breaches
  - b) Providing secure access to the company's network for women working remotely
  - c) Connecting multiple branch offices to a central network securely
  - d) Storing sensitive customer data securely on the company's servers
- 137) identify which service is NOT provided by Intelsat through satellite communication.
- a) Real-time weather forecasting
  - b) Broadband connectivity
  - c) Seamless mobility services
  - d) Multi-format video broadcasting
- 138) Which of these in a note-taking service used to add notes, lists, photos, and audio and also helps to get a reminder about a note and can be accessed on laptop/desktop or a smartphone?



- a) Google keep
  - b) Google Docs
  - c) Grematically
  - d) Google Dies
- 139) Analyze the difference between JavaScript and PHP based on their execution environment. Which statement is correct?
- a) JavaScript and PHP are used exclusively for styling web pages
  - b) Both JavaScript and PHP execute on the website s server
  - c) while PHP executes on the website s server. JavaScript and PHP execute on the user s computer
  - d) both JavaScript and PHP execute on the user s compute
- 140) How are numbers, letters, and special characters represented in a computer system?
- a) Using a decimal system.
  - b) As individual bits.
  - c) Using only hexadecimal digits.
  - d) As groups of eight bits called bytes.
- 141) Which of the following statements best describes the function of a Network Operating System (NOS)?
- a) It connects the computer to a network through an expansion card.
  - b) It forwards data packets from one network to another
  - c) I manages user accounts and resources for the entire network
  - d) It controls and coordinates the activities of all computers and devices on a network.
- 142) ----- also known as voice grade and low bandwidth which is used for standard telephone communication.
- a) None of these
  - b) Voice band
  - c) Voice record
  - d) Volume band
- 143) identify the primary reason why digital signals are more suitable for computers than analog signals.
- a) Digital signals are easier to generate
  - b) Analog signals are more reliable over long distances
  - c) Digital signals can be easily converted to other forms.
  - d) Computers process discrete data, making digital signals more compatible
- 144) How does the memory within a printer affect its performance?
- a) It increases the speed of printing large documents
  - b) It enhance duplex printing
  - c) It improves the resolution of printed images
  - d) It enhances the colour capability of the primary
- 145) Which of the following best describes the function of storage devices in a computer system?
- a) They provide power to the computer components

CST Institute -MS-CIT OBJECTIVES

- b) They need data and programs from storage media
  - c) They core sect different hardware components together
  - d) They provide data and execute programs
- 146) To save data into Secondary Storage is also known as
- a) Reading
  - b) Writing
  - c) Accessesing
  - d) Speedy
- 147) Hardware includes following: EXCEPT
- a) Keyboard
  - b) Mouse
  - c) Monitor
  - d) Data
- 148) In most cases, the word software is interchangeable with the word \_\_\_\_\_.
- a) Procedure
  - b) Program
  - c) Computer
  - d) Metadata
- 149) Antivirus programs protect your computer system from viruses or malicious programs. This is an example of which type of software?
- a) Utilities
  - b) Browser software
  - c) Operating system
  - d) Application software
- 150) \_\_\_ is the transmission of electronic messages over the Internet.
- a) Virus
  - b) Email
  - c) Windows Explorer
  - d) Microsoft Access
- 151) If you want to make friends and discuss topics with each other: Which websites you may refer to
- a) HDFC Bank
  - b) Facebook
  - c) Cloud Computing
  - d) Sendthisfile
- 152) You want to purchase mobile phone on Flipkart.com website. Referring to the above scenario, you are using..... Activity of the Internet.
- a) Social Networking
  - b) Ecommerce
  - c) E-communication
  - d) Messengers
- 153) Process of copying information to your computer from a specially configured FTP

CST Institute -MS-CIT OBJECTIVES

server is called as...

- a) Downloading
- b) Uploading
- c) Deleting
- d) Restoring

154) which would be the most appropriate type of application to create, analyze and forecast budgets?

- a) DBMS
- b) Word processor
- c) Presentation graphics
- d) Spreadsheet

155) \_\_\_\_\_ suites include a variety of programs designed to make computing easier and safer.

- a) ID Application
- b) System
- c) Hardware
- d) Utility

156) Graphic programs widely used in the graphic arts profession include \_\_\_\_\_.

- a) Mega media programs, image editors, and desktop publishing program.
- b) Desktop publishing programs, image editor, and illustrations programs.
- c) Artificial intelligence, Virtual reality, Desktop publishing and illustration program
- d) Virtual reality, desktop publishing programs, and illustration program.

157) Most operating systems support the ability to switch between different applications. This is called

- a) Multitasking
- b) Booting
- c) Translation
- d) Driving

158) The category of operating system used for handheld devices is

- a) Network
- b) Stand-alone
- c) Embedded
- d) Open source

159) The operating system is often referred to as the software environment or software....

- a) Network
- b) Platform
- c) Window
- d) Desktop

160) Disk Clean-up, File Compression, and Disk Defragmenter are all examples of

- a) Graphics
- b) Utility

CST Institute -MS-CIT OBJECTIVES

- c) Photo editing
  - d) Backup
- 161) Every time the computer system is started, the operating system loads these into memory.
- a) Driver updates
  - b) Device managers
  - c) Device drivers
  - d) Windows updates
- 162) The..... also known as the system chassis, is a container that houses most of the electronic components that make up a computer system
- a) Hard Disk
  - b) CD Drive
  - c) Monitor
  - d) System Unit
- 163) ....and.... is the most widely used handheld computing devices
- a) Personal Digital Assistants and Smartphone
  - b) Laptop and Notebooks
  - c) Desktop and Personal computers
  - d) Mini and Mid range Computers
- 164) .....is any data or instructions that are used by a computer
- a) Digital
  - b) Output
  - c) Information
  - d) Input
- 165) A keyboard key, like Caps Lock, that turns a feature on or off is called a.... Key.
- a) Power
  - b) Toggle
  - c) Function
  - d) Combination
- 166) The keyboard keys that have arrows on them are called as
- a) Function keys
  - b) Navigation keys
  - c) Typewriters keys
  - d) Special purpose keys
- 167) Card Readers and Barcode Readers are types of:
- a) Application Software
  - b) Printer
  - c) Monitor
  - d) Scanner
- 168) ..... Are specialized digital video cameras that capture images and Videos?
- a) OCR
  - b) Warehouse

CST Institute -MS-CIT OBJECTIVES

- c) Inkjet
  - d) Webcam
- 169) Which input device can be used for marking / solving a multiple choice test on a computer?
- a) Mouse
  - b) Printer
  - c) Optical Mark Recognition (OMR)
  - d) Digital Video Camera
- 170) A 'Data Opening' technique is used to search the database for related information and patterns.
- a) TRUE
  - b) FALSE
  - c) NOT OPTION
  - d) NOT OPTION
- 171) .....refers to the physical or logical layout of a network.
- a) Network Phase
  - b) Network Analysis
  - c) Network Topology
- 172) Which of the following is an example of an open source operating system?
- a) Mountain lion
  - b) Lion
  - c) Linux
  - d) Windows
- 173) A.... is a computer network that interconnects computer within a limited area such as a home, a computer laboratory, or an office building, using network media. Wide Area Network (WAN)
- a) Local Area Network (LAN)
  - b) Private Area Network (PAN)
  - c) Central Area Network (CAN)
- 174) Network operating systems (NOS) control and coordinate the activities of all computers and other devices on a network.
- a) TRUE
  - b) FALSE
  - c) NOT OPTION
  - d) NOT OPTION
- 175) The rules for exchanging data between interconnected computers are called as
- a) Programs
  - b) DSL
  - c) Modulation
  - d) Protocol
- 176) Packetization refers to breaking information into small parts.
- a) TRUE
  - b) FALSE
  - c) NOT OPTION

CST Institute -MS-CIT OBJECTIVES

- d) NOT OPTION
- 177) "The capacity of any network communication channel is measured as Bandwidth."  
a) TRUE  
b) FALSE  
c) NOT OPTION  
d) NOT OPTION
- 178) The distance between two pixels is known as.....  
a) Dot Pitch  
b) Refresh Rate  
c) Resolution  
d) Word Size
- 179) "Using which of the following type of communication channel, several users can simultaneously use a single connection for high-speed data transfer?"  
a) Voice Band  
b) Medium Band  
c) Baseband  
d) Broadband
- 180) Email Address is..... For every use.  
a) Unique  
b) Same  
c) Common  
d) None of these
- 181) Satellite connection is provided by cable television companies using television cables.  
a) TRUE  
b) FALSE  
c) NOT OPTION  
d) NOT OPTION
- 182) "Satellite connection services use satellites to provide wireless connections."  
a) TRUE  
b) FALSE  
c) NOT OPTION  
d) NOT OPTION
- 183) "DSL network connectivity is much faster than dial-up network connectivity."  
a) TRUE  
b) FALSE  
c) NOT OPTION  
d) NOT OPTION
- 184) "With the help of a computer, you can do all the following.....  
a) You can store and share the information  
b) You can pay electricity bill  
c) You can book railway tickets

CST Institute -MS-CIT OBJECTIVES

- d) You can wash cloths
- 185) "Desktop, laptop, tablet computers, and mobile devices are classified as"
- a) Mainframe Computers
  - b) Supercomputers
  - c) Midrange Computers
  - d) Personal Computer
- 186) "You want to build your own professional web page. You will be able to create web pages by using.....Programming language."
- a) JavaScript
  - b) Protocol
  - c) Microsoft Access
  - d) Domain Code
- 187) "Following features are available in Microsoft Excel EXCEPT....."
- a) Functions
  - b) What if Analysis
  - c) Table of Content
  - d) Charts
- 188) "Which of the following is not a function of the operating system?"
- a) Managing resources
  - b) editing a spreadsheet file
  - c) Providing a user interface
  - d) Running applications
- 189) The disk.....utility program eliminates unnecessary files on your hard disk.
- a) Defragment
  - b) Start-up
  - c) Editor
  - d) Clean up
- 190) "To stop the automatic relative cell references, i.e. to make the cell reference absolute, type a.....character before the column and row number"
- a) # (hash)
  - b) \$ (dollar)
  - c) % percent
  - d) star \*
- 191) Graphics Presentation Program may also suggest....and.....and.....schemes for different types of presentations and offer professionally designed templates to help you to create a presentation that is sure to hold the attention of your audience.
- a) computer tools
  - b) layouts
  - c) color
  - d) animation
- 192) "In formulas, a non-adjacent range is specified by giving the cell addresses separated by a "

CST Institute -MS-CIT OBJECTIVES

- a) semicolon (;)
  - b) comma (,)
  - c) full stop(.)
  - d) colon (:)
- 193) OMR, OCR, and MICR are all types of.....
- a) Radio Frequency Card Readers
  - b) Magnetic card readers
  - c) Character and mark recognition devices
  - d) Barcode readers
- 194) "The proportional relationship between a display's width and height is called....."
- a) Resolution
  - b) Aspect ratio
  - c) Dot pitch
  - d) Clock speed
- 195) "Which of the following characteristics about RAID is incorrect?"
- a) Expanded storage capability
  - b) Fast access speed
  - c) Highly reliable
  - d) one high-capacity hard disk drive
- 196) "..... Is the process of sharing data, programs, and information between two or more computers?"
- a) Installation
  - b) Communications
  - c) Compression
  - d) Installation
- 197) "The process of conversion of Analog Data to Digital Data is called"
- a) Modulation
  - b) Multiplexing
  - c) Demodulation
  - d) Binary Conversion
- 198) With the option, you can freeze either, or both, rows and columns. With this option regardless of where you are in the worksheet, you can see the information in those rows and/or columns at all time
- a) Split
  - b) Arrange
  - c) Filter
  - d) Freeze Panes
- 199) "What is the full form of MAN?"
- a) Metropolitan Area Network
  - b) Master Area Network
  - c) Metropolitan Art Network
  - d) None of these
- 200) Random Access Memory (RAM) is....Type of memory.



CST Institute -MS-CIT OBJECTIVES

- a) Permanent
  - b) Temporary
  - c) Flash
  - d) Smart
- 201) "is a drawing program that can be used to create and modify graphic images."
- a) Brush
  - b) Paint
  - c) Notepad
  - d) WordPad
- 202) \_\_\_\_\_ is used to see the web pages
- a) Inbox
  - b) Recycle bin
  - c) Internet Explorer
  - d) Network Neighborhood
- 203) "Discussion on the internet about specific topic is known as"
- a) News
  - b) News group
  - c) Veronica
  - d) Telnet
- 204) ".....restricts the data entry to meet certain conditions or requirements"
- a) Validation Text
  - b) Default Value
  - c) validation Rule
  - d) Format
- 205) Which of the following is a storage device
- a) CPU
  - b) Keyboard
  - c) Hard Disk
  - d) Monitor
- 206) "Full Form of URL is...."
- a) Universal Resource Locator
  - b) Uniform Resource Locator
  - c) Uni Resource Locator
  - d) Uni Resource Locator
- 207) "Which of these operating system does not have a graphical user interface ?"
- a) Windows 95
  - b) Mac OS
  - c) iOS
  - d) MS-DOS
- 208) "In MS Word when text is selected, a..... Is automatically displayed "
- a) Taskbar
  - b) Main Toolbar

CST Institute -MS-CIT OBJECTIVES

- c) **Mini Toolbar**
  - d) **Menu bar**
- 209) To send email to someone you need
- a) **Resident Address**
  - b) **Internet Connectivity**
  - c) **Fax address**
  - d) **email ID**
- 210) What is meant by E-commerce
- a) **Online selling,Purchasing,account handling etc**
  - b) **Learning commerce subject**
  - c) **Electronic equipment to deal with commercial problems**
  - d) **All of these**
- 211) Following are the file compression programs, EXCEPT
- a) **Win Zip**
  - b) **RAID**
  - c) **Win RAR**
  - d) **PKZIP**
- 212) "Which programs reduces the size of the files so that they occupy lesser space on the disk"
- a) **Backup**
  - b) **Disk Cleanup**
  - c) **File Compression**
  - d) **Uninstall Program**
- 213) .....is a prewritten formula that performs calculations automatically.
- a) **Function**
  - b) **Equation**
  - c) **Template**
  - d) **Reaction**
- 214) The easiest way to access any part of the screen in the windows operating system is using the.....
- a) **Keyboard**
  - b) **Rat**
  - c) **Mouse**
  - d) **Printer**
- 215) "Websites that allow the user to search for data using keywords is:"
- a) **Chat engines**
  - b) **Routers**
  - c) **Web server**
  - d) **Search engines**
- 216) "Following is a script language used, while designing a web page."
- a) **HTML (Hyper Text Markup Languages)**
  - b) **HTML (Hyper Link Markup Language)**

CST Institute -MS-CIT OBJECTIVES

- c) HTML (Hyper Text Web Language)
  - d) None of these
- 217) "A ..... is a special slide that controls the format and placement of titles and text for all slides in your presentation "
- a) **Master**
  - b) Main
  - c) Slide
  - d) All of these
- 218) "..... are separate external files that are sent along with your email message.
- a) **Attachments**
  - b) Options
  - c) emails
  - d) Parcels
- 219) "Which of the following facility is provided by an operating system?"
- a) **User Interface**
  - b) Surfing
  - c) Spelling Checker
  - d) Browsing
- 220) what does the abbreviation www stands for?
- a) Wide World Web
  - b) Wide Wide Web
  - c) **World Wide Web**
  - d) Web World Wide
- 221) .....is also known as the system cabinet or chassis.
- a) **System Unit**
  - b) Monitor
  - c) Keyboard
  - d) None of these
- 222) Microsoft PowerPoint has three main views
- a) **Normal View**
  - b) **Slide Sorter View**
  - c) **Slide Show View**
  - d) Basic view
- 223) For navigating any website, user has to enter
- a) **URL**
  - b) www
  - c) PPP
  - d) None of these
- 224) Flatbed and handheld are types of
- a) Headsets
  - b) Maxi Code
  - c) Monitors

d) **Scanners**

- 225) Web spiders and crawlers are examples of
- a) Browsers
  - b) **Search engines**
  - c) HTML programs
  - d) Flames
- 226) Most keyboards use an arrangement of keys known as:
- a) Alpha
  - b) Daisy
  - c) Optikey
  - d) **QWERTY**
- 227) "Which of the following are the examples of ecommerce?"
- a) **An individual purchases a book on the Internet**
  - b) A government employee reserves a hotel room over the Internet.
  - c) An individual paying his electricity bill through the Internet
  - d) a person handovers signed document
- 228) DNS stands for....
- a) Digital Number System
  - b) Digital Name Server
  - c) Dynamic Name Server
  - d) **Domain Name System**
- 229) "All of the following Ribbon tabs are displayed in Word, EXCEPT....."
- a) Home
  - b) Insert
  - c) **Tools**
  - d) Page Layout
- 230) .....are used to communicate information visually through various formats like Venn diagram organization charts
- a) WordArt
  - b) ClipArt
  - c) **Smart Art**
  - d) Auto shape
- 231) The physical layout of wires and devices that connect the network nodes is called the network's.....
- a) **Topology**
  - b) Biology
  - c) Technology
  - d) None of these
- 232) IP Address means
- a) Internal Process address
  - b) Intranet Protocol address
  - c) **Internet Protocol address**

CST Institute -MS-CIT OBJECTIVES

- d) Interval Protocol address
- 233) .....stores the information in a database.
  - a) Tables
  - b) Queries
  - c) Reports
  - d) Forms
- 234) Applications help you to create different types of written documents such as personal letters, form letters, brochures, faxes and even professional manuals
  - a) Word Processor
  - b) WordPad
  - c) Notepad
  - d) Spreadsheets
- 235) Hierarchical Network is also called as.....
  - a) Ring Network
  - b) Hybrid Network
  - c) Hi Network
  - d) Logical Network
- 236) "From the given list, which all are the types of Memory Chips?"
  - a) RAM
  - b) ROM
  - c) CMOS
  - d) ASCII
- 237) .....data type is used to store numbers only
  - a) Auto Number
  - b) Text
  - c) Number
  - d) Date-Time
- 238) "Which of the following components is used to store data?"
  - a) CPU
  - b) Memory
  - c) Input Device
  - d) Output Device
- 239) A.....is used to identify the data stored in a field
  - a) table
  - b) field name
  - c) box
  - d) bracket
- 240) A is a pre-designed document useful for creating common purpose documents such as a fax, invoice or business letter
  - a) Template
  - b) File
  - c) Form

CST Institute -MS-CIT OBJECTIVES

- d) Database
- 241) .....is used for sending and receiving messages and electronic documents using internet
- a) Email
  - b) WordPad
  - c) Shopping
  - d) CPU
- 242) You may use any of the standard templates provided by Microsoft Word for your document such as:
- a) Microsoft Word
  - b) Google Docs
  - c) Leap
  - d) Notepad
- 243) ISP stands for.....?
- a) Internal Service Plan
  - b) Internet Service Plan
  - c) Integral Service Provider
  - d) Internet Service Provider
- 244) "Every computer on the internet has a unique numeric address called as"
- a) IP Address
  - b) Address
  - c) IS Address
  - d) IN Address
- 245) .....is a type of background software that helps the computer to manage its own internal resources
- a) System software
  - b) Information
  - c) Objects
  - d) Application Software.
- 246) The..... tab contains the basic formatting tools.
- a) Design
  - b) View
  - c) Insert
  - d) Home
- 247) ".....Specifies a field caption or a prompt for the user to enter data."
- a) Format
  - b) Input mask
  - c) Caption
  - d) Field Size
- 248) "File created using Notepad is saved with the extension"
- a) txt
  - b) docx
  - c) png
  - d) jpg
- 249) "Directory Search is also known as..."

CST Institute -MS-CIT OBJECTIVES

- a) Direct Search
  - b) Unique Search
  - c) Index Search
  - d) Internet Search
- 250) A.....is a rectangular section on the screen that is used to display information and other programs
- a) Icon
  - b) Desktop
  - c) window
  - d) Panel
- 251) .... Is an Operating System developed by 'Apple'?
- a) Windows
  - b) ios
  - c) office
  - d) Android
- 252) JPEG stands for
- a) Java Programming Expert Group
  - b) Joint Photographic Experts Group
  - c) Job Processing External Group
  - d) Job Photographic Experts Group
- 253) A .....is a listing of the topics that appear in a document with their associated page references
- a) Internet
  - b) Table
  - c) Clipboard
  - d) Table of Contents
- 254) .....utility identifies unnecessary files on the hard disk and erases them based on users command
- a) Backup
  - b) File Compression
  - c) Uninstall Program
  - d) Disk Cleanup
- 255) .....convert the programming instructions written by programmers into a language that computers understand and process.
- a) Utilities
  - b) Device Drivers
  - c) Language Translators
  - d) Printer C
- 256) .....is a concept related to using computer networks to connect people and resources.
- a) Data
  - b) Information
  - c) Formatting

d) **Connectivity**

- 257) .....programs that guard your computer system against viruses or other damaging programs
- a) Backup
  - b) **Antivirus**
  - c) Control Panel
  - d) MS Office
- 258) Which of the following statement is correct
- a) **1 KB = 1024 bytes**
  - b) 1 MB=2048 bytes
  - c) 1 MB = 1000 kilobytes
  - d) 1 KB = 1000 bytes
- 259) "Keyboards, mouse, keypads are the examples of which types of devices?"
- a) **Input Devices**
  - b) Output Devices
  - c) Utilities
  - d) Processor
- 260) URL stands for
- a) Uniform Result Location
  - b) **Uniform Resource Locator**
  - c) Universal Remote Location
  - d) Universal Remote Location
- 261) "Footnotes or Endnotes are used to provide certain....."
- a) **references**
  - b) pictures
  - c) points
  - d) lists
- 262) .....are also known as Service Programs.
- a) OS
  - b) Device Drivers
  - c) **Utility**
  - d) Websites
- 263) Which of the following element is not included in Email
- a) Header
  - b) **Footer**
  - c) Message
  - d) Signature
- 264) FTP means.....
- a) Field Transfer Project
  - b) File Transfer Project
  - c) **File Transfer Protocol**
  - d) File Text Protocol



- 265) What is the name of the part of the circle on which data is written in a storage media
- a) Track
  - b) Sector
  - c) Cylinder
  - d) Spiral
- 266) "Which of the following is an example of an Open source Software?"
- a) MS Office
  - b) Libre Office
  - c) Adobe Photoshop
  - d) Skype
- 267) "Which of the following are highly portable devices that support the use of a stylus or digital pen to input commands and data?"
- a) Printer
  - b) Scanner
  - c) Desktop
  - d) Tablet PCs
- 268) A template file in MS excel has an extension.....
- a) docx
  - b) lytx
  - c) xltx
  - d) zitx
- 269) "Which of the following are the functions of an operating system?"
- a) to control the computer at fundamental level
  - b) to manage computer memory.
  - c) to control access to computer devices
  - d) Assembling the Computer
- 270) .....is like a container in which you can store files.
- a) Icon
  - b) document
  - c) folder
  - d) Sheet
- 271) In the 'File' tab of MS-Word, what are the different options available for saving a document?
- a) Save
  - b) Export
  - c) Save To
  - d) Save As
- 272) The.....is a dictionary of synonyms which you can use to find the words that are synonymous with a term.
- a) Translate
  - b) Spelling
  - c) Thesaurus

CST Institute -MS-CIT OBJECTIVES

- d) Research
- 273) "When you move your mouse over a sizing handle the pointer becomes a....."
- a) Round
  - b) Two Head Arrow
  - c) Plus Sign
  - d) Four Headed Arrow.
- 274) "The network interconnecting several computers all over the world is..."
- a) Intranet
  - b) Internet
  - c) Arpanet
  - d) Network
- 275) "Which of the following is an example of a search engine.."
- a) Google
  - b) Bing
  - c) Yahoo
  - d) Facebook
- 276) "In MS-Excel, ----- is a method which helps you in forecasting values.
- a) Find
  - b) Replace
  - c) Goal Seek
  - d) Go to
- 277) "In MS Word when text is selected, is..... automatically displayed."
- a) Taskbar
  - b) Main Toolbar
  - c) Mini Toolbar
  - d) Menu bar
- 278) "Which of the following option is not an element of a spreadsheet?"
- a) rows
  - b) transistors
  - c) columns
  - d) worksheets
- 279) "Which of the following activity is NOT an ecommerce activity?"
- a) Doing an Online mobile recharge using Paytm App
  - b) Purchasing a Smartphone on Flip kart
  - c) Opening Google website to search nearby hospital
  - d) Online renewal of an Insurance policy
- 280) Which of the following is not a font style?
- a) Bold
  - b) Italic
  - c) Regular
  - d) Superscript
- 281) ....and....are a few of the popular Word Processors.

CST Institute -MS-CIT OBJECTIVES

- a) **Microsoft Word**
  - b) Google Docs
  - c) Leap
  - d) Notepad
- 282) "Which of the following is a correct example of an Email address format?"
- a) name@website@info
  - b) name@website.info
  - c) www.nameofwebsite.com
  - d) name.website.com
- 283) "Which of the following hardware is an example of primary memory?"
- a) **RAM**
  - b) DVD
  - c) Pen Drive
  - d) Hard Disk
- 284) "Which of the following buttons are present on the Title bar?"
- a) **Minimize**
  - b) Start
  - c) **Maximize**
  - d) **Close**
- 285) If any word or excel file on a computer is printed then that printout is called as.....
- a) File Copy
  - b) Soft Copy
  - c) **Hard Copy**
  - d) User Copy
- 286) "Which software is used to play music in Windows? "
- a) **Windows Media player**
  - b) Windows audio player
  - c) Windows music player
  - d) Disk Manager
- 287) "In MS PowerPoint, which tab contains the options to change the slide settings like color, font and Page Setup?"
- a) Transition
  - b) **Design**
  - c) Insert
  - d) File
- 288) Which Page Type will you insert if you want to provide an introduction page to your document?
- a) Application
  - b) Spreadsheet
  - c) Envelope
  - d) **Cover Page**
- 289) .....is a basic text editing program and it is most commonly used to edit text files?

CST Institute -MS-CIT OBJECTIVES

- a) Calculator
  - b) Notepad
  - c) Address book
  - d) Paint
- 290) "The Number System based on 0 and 1 is known as..."
- a) Binary System
  - b) Barter System
  - c) Decimal System
  - d) Hexadecimal System
- 291) "Instead of function keys which keys are used to create a shortcut?"
- a) Toggle keys
  - b) Special keys
  - c) Combination keys
  - d) Numeric keys
- 292) "Google Chrome, Opera, Mozilla Firefox are the examples of."
- a) System Software's
  - b) Internet Browsers
  - c) Graphics Designing software's
  - d) Text Editors
- 293) "Which of the following things are mainly used while designing a Website? "
- a) URL
  - b) Domain Name
  - c) HTML,hypertext markup language
  - d) MS Outlook
- 294) "The keyboard keys that are labeled F1, F2 and so on are called. "
- a) Function keys
  - b) Numeric keys
  - c) Typewriters keys
  - d) Special purpose keys
- 295) .....and.... is required while saving a file on a computer.
- a) Computer name
  - b) website name
  - c) File Name
  - d) Extension
- 296) com', 'in', '.org' are also called.....
- a) Websites
  - b) Top Level Domains
  - c) Root Domains
  - d) Browsers
- 297) Which of the following websites is NOT an example of Social Media Networking site?
- a) Facebook
  - b) Wikipedia

CST Institute -MS-CIT OBJECTIVES

- c) Twitter
  - d) Instagram
- 298) "Which of the following units are used to measure size of data in a computer? "
- a) Pixels
  - b) Bytes
  - c) Bits
  - d) Dots
- 299) RAM and ROM have major difference in the terms of
- a) Capacity
  - b) Volatility
  - c) Speed
  - d) Accuracy
- 300) "All the pages are interlinked in a web site using this..... Features."
- a) Hyper loop
  - b) Hyperlinks
  - c) Network
  - d) Email
- 301) "A cabinet inside which motherboard, power supply, hard disk get connected together is also known as..."
- a) Power Unit
  - b) System Unit
  - c) System Board
  - d) Firmware
- 302) If we select any file on a computer and press the Delete button, then the file will be .
- a) saved in a folder
  - b) renamed
  - c) moved to recycle Bin
  - d) deleted from hard disk
- 303) The keys labeled 0-9 on the keyboard are called..
- a) Function keys.
  - b) Numeric keys
  - c) Typewriter keys
  - d) Special purpose keys
- 304) The windows interface is also known as
- a) Graphical User Interface or GUI
  - b) Application Program Interface or API
  - c) Clipboard
  - d) Command Line Interface
- 305) "Which of the following device is used to play games on a computer ? "
- a) Scanner
  - b) Printer
  - c) Mouse

- d) Joystick
- 306) "Which utility can give information about the computer's hard disk?"
- a) Devices and Printers
  - b) Disk Management
  - c) Device Drivers
  - d) Documents
- 307) Which of the following is not a type of a printer?
- a) inkjet
  - b) LaserJet
  - c) in matrix
  - d) dot matrix
- 308) "Which of the following option is not associated with Wireless internet connectivity?"
- a) Bluetooth
  - b) Wi-Fi
  - c) mail merge
  - d) Satellites
- 309) Which of the following components are used to store the information in database?
- a) Tables
  - b) WebPages
  - c) Queries
  - d) HTML AC
- 310) Which type of cable is required to connect an external Hard Disk to a computer?
- a) Serial cable
  - b) Network cable
  - c) USB cable
  - d) Audio cable
- 311) "The first cell in EXCEL worksheet is having name / label as.."
- a) AA
  - b) A1
  - c) AO
  - d) Aa
- 312) Sunil had sent a word file to Amit as he wanted Amit to make a few changes in the document. What feature should Sunil use to know the changes done by Amit?
- a) Edit Document
  - b) Monitor Changes
  - c) Track changes
  - d) Track All
- 313) "When you type an address such as <http://www.mkcl.org>, in this .org indicates that it is a."

CST Institute -MS-CIT OBJECTIVES

- a) original website
  - b) Commercial website
  - c) Organizational website
  - d) Educational web site
- 314) Which of the following devices will be used for making a video call from a computer?
- a) Keyboard
  - b) Webcam
  - c) microphone
  - d) Printer
- 315) While sending an Email option CC means.....
- a) Carbon Card
  - b) Connection Copy
  - c) Carbon Copy
  - d) Consumer Copy
- 316) "Telephone lines are used in used.....type of internet connectivity "
- a) Dial Up
  - b) boradband
  - c) Wireless
  - d) Fiber-optic
- 317) When a computer is powered off, the data stored in Random Access Memory (RAM) will be.....
- a) remained it is
  - b) moved to hard disk
  - c) erased
  - d) restored
- 318) "If a file or folder in your computer is compressed to reduce its size, then the extension will be."
- a) com
  - b) do
  - c) zip
  - d) exe
- 319) "Which of the following operating systems is created by Microsoft?"
- a) Windows 10
  - b) Fedora
  - c) Linux
  - d) Mac OS
- 320) One cell format can be copied to another cell by using.....option in a spreadsheet.
- a) Format copy
  - b) Format Setting
  - c) Format Painter

CST Institute -MS-CIT OBJECTIVES

- d) Cell Style
- 321) Toolbars typically appear below the menu bar and include small graphic elements called
  - a) Gallery
  - b) Store
  - c) Button
  - d) Utility
- 322) Which of the following specialized graphics program is used to edit digital photographs?
  - a) image editor
  - b) Spreadsheet
  - c) Word Processor
  - d) Skype
- 323) Motherboard is also known as
  - a) Primary Storage
  - b) Processor Unit
  - c) System Board
  - d) Memory Board
- 324) Which of the following is output device?
  - a) Mike
  - b) Keyboard
  - c) Printer
  - d) Mouse
- 325) "The term www refers with which topic?"
  - a) MS Word
  - b) MS Excel
  - c) Internet
  - d) MS Powerpoint
- 326) .....is used to download apps on android smart phones.
  - a) domain codes
  - b) Google play store
  - c) DNS
  - d) Google drive
- 327) "Which of the following is mobile- based application called as e-commerce ?"
  - a) Google Maps
  - b) Flipkart
  - c) Google drive
  - d) Mozilla
- 328) If a Computer is restarted, it is a.....
  - a) Hard boot
  - b) Warm boot
  - c) Cold boot



- d) First boot
- 329) "The count of total pages in a word document is displayed on...."
- a) status bar
  - b) tool bar
  - c) scroll bar
  - d) task bar
- 330) "Which of the following payment options can be used after purchasing any good from an ecommerce website?"
- a) Net banking
  - b) Credit card
  - c) Cash on delivery
  - d) Passbook
- 331) .....is the unit used to measure the speed of microprocessor in computers
- a) bits per second
  - b) megahertz
  - c) nanoseconds
  - d) dots per inch
- 332) ".....shortcut key is used to shift to the first slide in a PowerPoint presentation."
- a) Page Up
  - b) Page Down
  - c) Home
  - d) End
- 333) Which of the following popular social media networking site is also known as micro blogging site?
- a) LinkedIn
  - b) Google
  - c) Twitter
  - d) Wikipedia
- 334) Which of the following is not a type of Smart Art graphic?
- a) Cycle
  - b) Matrix
  - c) Pyramid
  - d) Bullets
- 335) "Which of the following devices can be connected using the USB ports on a desktop computer?"
- a) Pen drives
  - b) Printer
  - c) Monitor
  - d) Webcam
- 336) "In Windows operating system, tools like Notepad, Calculator, Sound Recorder are included under.....programs."

CST Institute -MS-CIT OBJECTIVES

- a) Control Panel
  - b) Accessories
  - c) Maintenance
  - d) Startup
- 337) "Which of the following tools are inbuilt in Windows operating systems?"
- a) Snipping Tool
  - b) Windows media player
  - c) MS paint
  - d) Adobe PDF Reader
- 338) Which of the following card does not have a microchip?
- a) ATM Card
  - b) Credit Card
  - c) Aadhar Card
  - d) Sim Card
- 339) MS Office 365 is an example of
- a) Online Calendar
  - b) Cloud Suite
  - c) Backup Software
  - d) Wireless Network.
- 340) ".....is a menu that appears upon right click mouse operation?"
- a) Control Menu
  - b) System Menu
  - c) Context Menu
  - d) Title Bar
- 341) Keypad in smart phones and tablet PCs are also known as
- a) notepad
  - b) WordPad
  - c) text board
  - d) virtual keyboard
- 342) "Which of the following popular social media networking site is also known as microblogging site?"
- a) LinkedIn
  - b) Google
  - c) Twitter
  - d) Wikipedia
- 343) "Network that connects together things, people and animal (tracking devices in dairy, farmetc) from worldwide, using sensors and internet is known as."
- a) Block chain
  - b) Internet of Things (IoT)
  - c) Cloud Computing
  - d) Machine Network
- 344) "Which of the following are the examples of Optical Storage Devices?"

CST Institute -MS-CIT OBJECTIVES

- a) CDs
  - b) DVDS
  - c) Pen drives
  - d) Blue ray disk
- 345) "Using file transfer utility software, you can copy files to your computer from servers on the Internet. This is called:"
- a) downloading
  - b) filtering
  - c) blogging
  - d) ploading
- 346) "Which of the following is not an element of internet browser? "
- a) History
  - b) Plug-in
  - c) Filters
  - d) Webcam
- 347) You can store your various documents online like, scanned academic certificates, driving license, RC book at
- a) DigiLocker
  - b) Google Drive
  - c) Google Talk
  - d) Google Hangout
- 348) "Google Docs is an example of"
- a) System application
  - b) Blogging Website
  - c) Graphics Suit
  - d) Web Based Office Suite
- 349) Which of the following network devices are used while doing network connection?
- a) Switch
  - b) Router
  - c) hard disk
  - d) modem
- 350) "The operating system installed on virtual machine is called as"
- a) Admin os
  - b) User OS
  - c) Network OS
  - d) Guest OS
- 351) Which section of IT act misuse digital signature?
- a) 67A
  - b) 66A
  - c) 66C
  - d) 72

- 352) LAN Means?
- a) Local Area Network
  - b) Local Guide Network
  - c) Local Arena Network
  - d) Locality Area Network
- 353) which of the following practices could most likely result in decreased battery life?
- a) avoiding exposure to excessive heat and using a laptop cooler of fan
  - b) Regularly calibrating the battery as per the manufacturing guidelines.
  - c) storing the laptop with the battery still installed when not in use for several weeks
  - d) using the laptop on battery power for a while without draining it completely before recharging it 100 percentage
- 354) To Type in word document which of the following is the best hardware
- a) Mouse
  - b) Speaker
  - c) Keyboard
  - d) Joystick
- 355) Considered the link below :- Website is \_\_\_\_\_
- a) Safari
  - b) Secure
  - c) not secure



- 356) The search Engine that a user could be use in shown image. This allow user to search anonymously which of the following allow user to do this?
- a) Quackers
  - b) Mailardminx
  - c) Duckduckgo
  - d) WebbedFeet

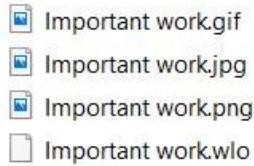


- 357) The image show the information about
- a) Microprocessor
  - b) Ram
  - c) Speed
  - d) Memory

Intel(R) Core(TM) i7-4810MQ CPU @  
2.80GHz 2.80 GHz

358) Which of the following extension as shown in picture is not used for image or paint related.

- a) gif
- b) jpg
- c) png
- d) wlo



359) Consider the website below:

- a) Google Expert
- b) Quora
- c) Wikipedia
- d) StackOverflow

Feeds Edit

Top Stories

New Questions

Bookmarked Answers

- London
- Mathematics
- Business
- Books
- Science

360) In the given image how many word file is opened

- a) Only One
- b) Only Two
- c) At least Two
- d) More Than Two



CST Institute -MS-CIT OBJECTIVES

361) Consider the location and called as

- a) UNC
- b) KNR
- c) TNR
- d) PSP

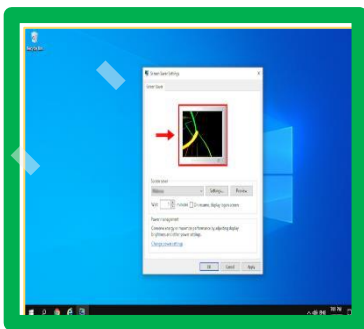
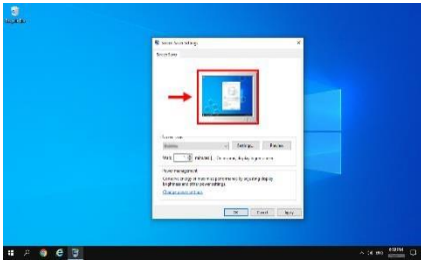
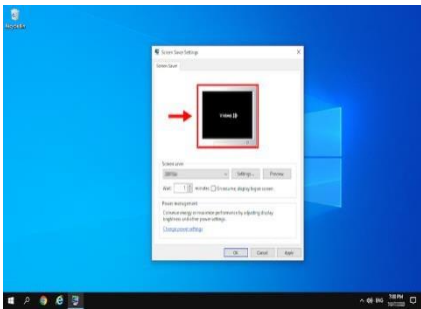
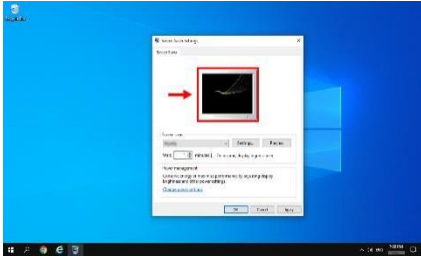


362) The user clicks on the part shown in the red box in the lower right corner of the user screen: What will happen next?

- a) The user is taken to the desktop
- b) The user views the properties of the task
- c) The control panel appears on the screen
- d) The taskbar status is switched to auto-hidden



363) If you want to apply screensaver of ribbon which of the following image will apply ribbon to screen.



364) Which of the following is an option for Voter ID registration for new patients?



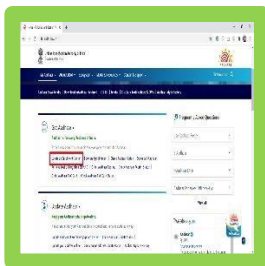


365) Which option you choose to check the summary PF account details.



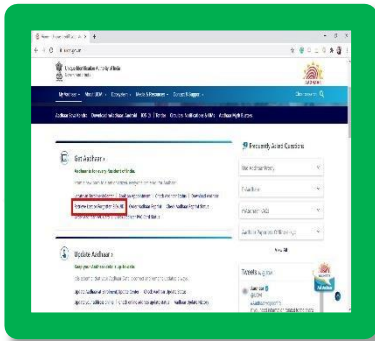
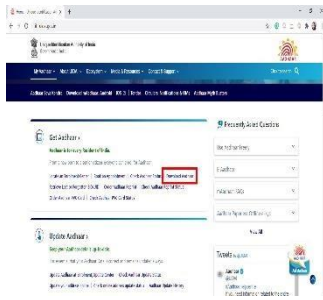
# CST Institute -MS-CIT OBJECTIVES

366) You are on travel and you lost your aadhar card and also forgot aadhar number now how can your retrieve your aadhar details.



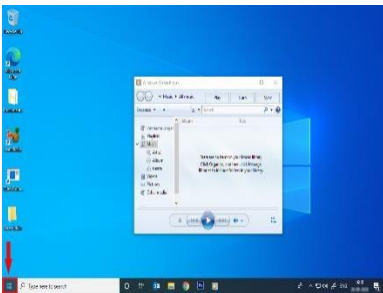
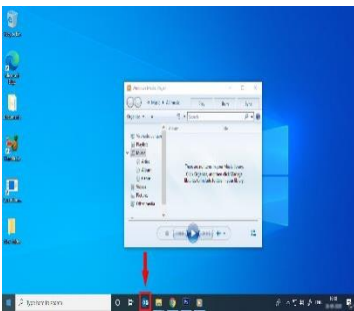
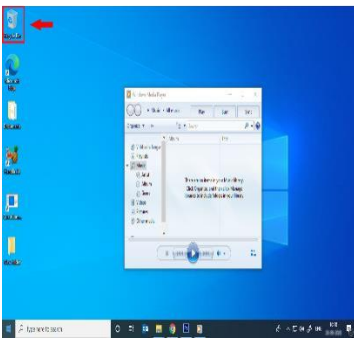
# CST Institute -MS-CIT OBJECTIVES

367) You have lost your aadhar now you want to take new copy of your aadhar card how can you copy of your aadhar card



CST Institute -MS-CIT OBJECTIVES

368) Which of the following option in windows is used for volume increase and decreased in windows.

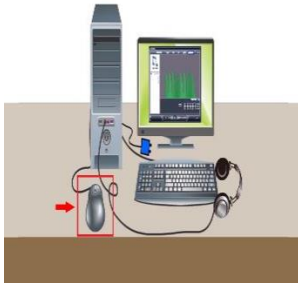
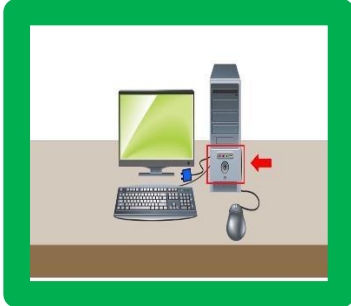


CST Institute -MS-CIT OBJECTIVES

369) Which of the following option show that Computer is connected to Network?



370) To plug Mike or Headphone which option of image is correct?



CST Institute -MS-CIT OBJECTIVES

371) Which key will we used after typing ID & Password to System or any credential in computer system.



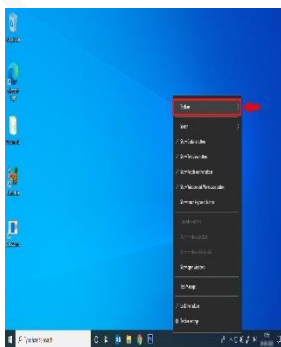
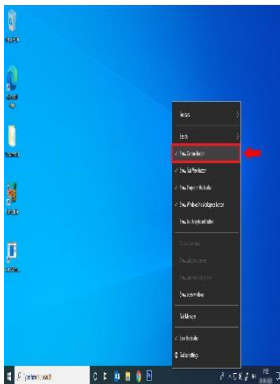
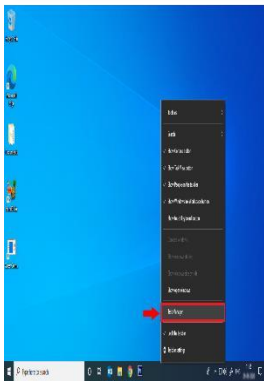
372) Identify the Function key of from the given images





## CST Institute -MS-CIT OBJECTIVES

373) To change Taskbar Position which option from the following will be used?



CST Institute -MS-CIT OBJECTIVES

374) Which of the following is a pointing device



# CST Institute -MS-CIT OBJECTIVES

375) To View all Desktop program can use which of the following option

